

RESEARCH RESOURCES

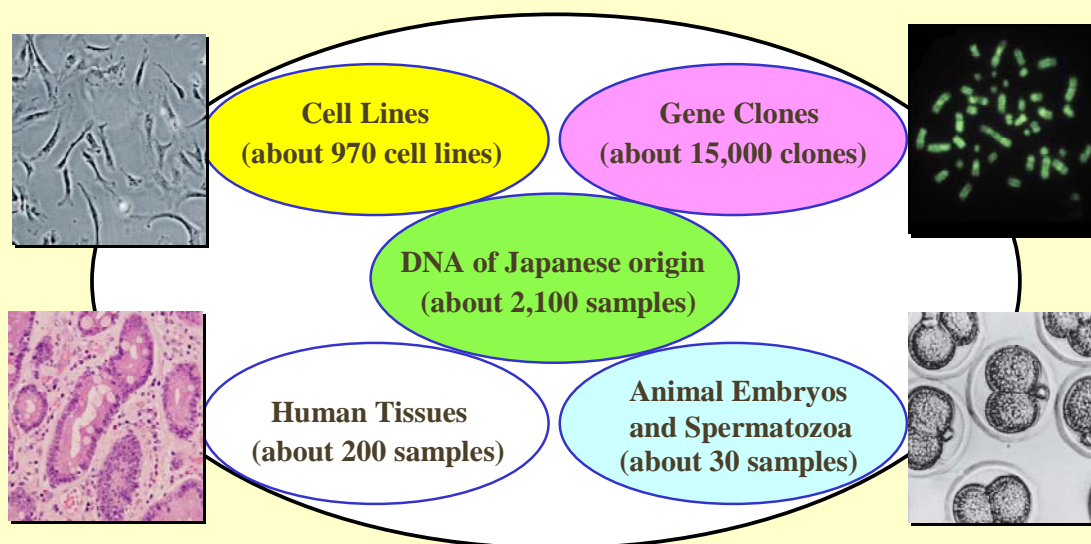
-CURRENT STATUS-

**Japan Health Sciences Foundation
Health Science Research Resources Bank
(HSRRB)**

www.jhsf.or.jp/English/index_p.html

Research Resources

HSRRB stores cell lines, gene clones, B cell lines of Japanese origin and their DNA for SNP analysis, human tissues, and mouse/rat embryos and spermatozoa for supply on request to research groups in industry, government and academia.



Cell Bank

- About 970 cell lines, 58% human origin
- A number of cancer cells derived from various cancerous tissues from Japanese patients:
 - human hepatoma cells, HuH-7, HLE, HuH-28
 - human stomach adenocarcinoma cells, MKN1, MKN7, MKN45
 - human leukemia NK-like cells, MTA, KHYG-1, KAI3
- Unique cells:
 - human liver Ito cells (hepatic stellate cells), LI90
 - mouse neural precursor cells, MEB5, AP-16
- Human mesenchymal stem cell lines:
 - derived from bone marrow and umbilical cord blood, and immortalized by transduction with hTERT and HPVE6/7

Cell Lines of High Frequency of Use

(In alphabetical order)

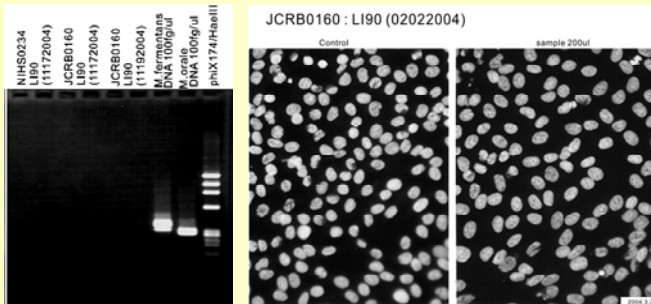
•293	•DLD-1	•HuH-7☆	•LI90☆	•NIH/3T3 clone5611
•3T3 L1	•EBC-1☆	•HUV-EC-C	•LLC-PK1	•OUMS-27☆
•A549	•HeLa	•IMR-90	•LoVo	•PC-12
•ABC-1☆	•Hep G2	•J774.1	•MCF-7	•RBL-2H3
•B16 melanoma	•HH☆	•J774A.1	•MEB5☆	•THP-1☆
•B95-8	•HL60	•K562	•MIA PaCa-2	•TIG-3-20☆
•Ca9-22☆	•HLE☆	•KATOIII☆	•MKN1☆	•U-251MG
•CHL/IU☆	•HSC-2☆	•KHYG-1☆	•MKN7☆	•U937
•CHO-K1	•HSC-3☆	•KU812☆	•MKN45☆	•V79
•COLO201	•HT-1080	•KYSE30☆	•MKN74☆	•VERO☆
•COS-1	•HuCCT1☆	•KYSE50☆	•NB-1☆	•WI-38
•COS-7	•HUH-6 clone 5☆	•KYSE140☆	•Neuro-2a	•WiDr

☆ established in Japan

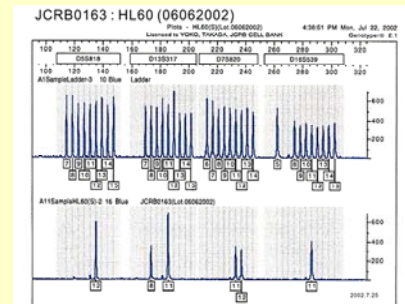
Quality Control Tests

- Viability Test
- Test for Contamination of Microorganisms
- Species Identification by Isozyme Analysis and Nested PCR
- DNA Profiling of Human Cells by STR-PCR in Part of Cell Lines
- Chromosome Analysis in Part of Cell Lines
- Virus Test of Human Cells

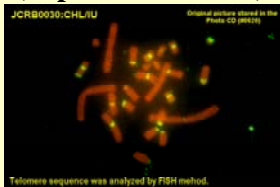
Test for Contamination of Microorganisms
(bacteria, fungi, mycoplasma)



DNA Profiling of Human cells
(STR-PCR)

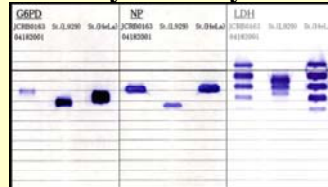


Chromosomal Analysis
(in part of cell lines)

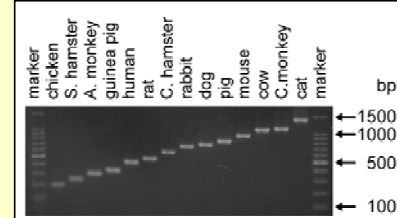


Species Identification

Isozyme Analysis



Nested PCR



The list of cell lines is published on our website: http://www.jhsf.or.jp/English/index_p.html
Please visit this website for updated information on the cell lines.

Gene Bank

DNA Clones, etc.

Classification	Abbreviation	No. of items
DNA clones, etc.		
Hosts	HT	17
Vectors	VE	69
Cellular oncogenes	CO	115
Human genes	HG	338
Libraries	LI	3
Mouse genes	MG, MIG	37
Human disease-related genes	HDG	499
Viral genomes	VG	43
Viral oncogenes	VO	23
Variable number tandem repeats, and highly polymorphic DNA clones	VNTR	63
	HPDS	14
	SPDS	58
Human chromosome-specific DNA segment clones	CCI	3,673
Mouse brain cDNA clones	MNCb	5,304
Cynomolgus monkey cDNA clones	Qcc, etc.	4,613

Cynomolgus monkey cDNA clones

The HSRRB supplies cDNA clones derived from the brains and testis of cynomolgus monkey (*Macaca fascicularis*, crab-eating macaque, long-tailed macaque). The cDNA libraries were constructed using the oligo-capped method by the JCRB gene bank at the National Institute of Biomedical Innovation.

Immortalized B-cell Lines and Purified DNA Derived from Japanese Subjects

The gene bank contains immortalized B-cell lines and purified DNA samples derived from about 2,100 Japanese volunteers. These B-cell lines were deposited by the Pharma SNP Consortium (PSC) and the Japan Biological Informatics Consortium (JBIC). These are available on request for supply to research groups as important resources for gene analysis of the general Japanese population.

1. PSC cell lines derived from 976 normal Japanese volunteers (595 males and 381 females).
2. JBIC cell lines derived from 438 cell lines from normal subjects, 246 from rheumatoid arthritis patients, 293 from psoriasis patients and 195 from type 2 diabetes patients.

PSC cell lines			
Normal	Age	Male	Female
	20~29	109	136
	30~39	207	139
	40~49	132	51
	50~59	109	37
	60~69	34	13
	70~79	4	5
	Total	595	381

JBIC cell lines			
Normal	Age	Male	Female
	20~29	49	73
	30~39	79	44
	40~49	68	42
	50~59	35	27
	60~69	7	9
	70~79	0	2
	Unknown	0	3
	Total	238	200

Patients	Rheumatoid arthritis	
	Male	Female
	56	190
	Psoriasis	
	Male	Female
	230	63
	Type 2 diabetes	
	Male	Female
	100	95

Literature (DNA samples of B cell lines supplied from HSRRB were used)

- SNPs in the KCNJ11-ABCC8 gene locus are associated with type 2 diabetes and blood pressure levels in the Japanese population.:

J Hum Genet. 2007;52:781-93. Sakamoto Y, Inoue H, et al.

Discount

Japanese-origin B cell lines and the DNA are allowed a discount of 20-70% off for more than 30 samples. There is a discount price for 50 sets and 100 sets of DNA samples derived from normal subjects as shown in the last page.

Distribution Fees

Cells	Domestic public-institutions	24,000 Yen		
	Domestic general-institutions	29,000 Yen		
	Overseas institutions	26,000 Yen		
		plus transportation expense and the bank charge (4,000 Yen) and dry-ice package charge (9,300 Yen)		
Genes		Recombinant	Vector	Host
	Domestic public-institutions	15,600 Yen	23,100 Yen	8,000 Yen
	Domestic general-institutions	18,900 Yen	28,200 Yen	9,700 Yen
	Overseas institutions	17,600 Yen	26,400 Yen	8,800 Yen
		plus transportation expense and the bank charge (4,000 Yen)		
Japanese -origin B cell lines		DNA (10µg/sample)		
	Domestic public-institutions	7,000 Yen		
	Domestic general-institutions	8,500 Yen		
	Overseas institutions	7,500 Yen		
	plus transportation expense and the bank charge (4,000 Yen)			
Discount for bulk purchases	Genes	30~99 samples: 20% discount	500~999 samples: 60% discount	
		100~499 samples: 35% discount	1,000~ samples: 70% discount	
	Cells	A set of cell lines incorporated with human monochromosomal hybrid cell panel (JCRB2201-2223) is given 70% discount.		
		Japanese-origin B cell lines and DNA(10µg/sample) prepared from them		
		30~99 samples: 20% discount	500~999 samples: 60% discount	
		100~499 samples: 35% discount	1,000~ samples: 70% discount	
		A set of DNA(2µg/sample) prepared from B cell lines isolated from normal subjects of Japanese		
		50 sample set	100 sample set	
	Domestic public-institutions	55,000 Yen	90,000 Yen	
	Domestic general-institutions	70,000 Yen	110,000 Yen	
	Overseas institutions	60,000 Yen	100,000 Yen	

Please contact the HSRRB for questions on each resource and for purchase or to place an order.

2-11 Rinku-Minamihama, Sennan-shi, Osaka 590-0535, Japan
 TEL : +81-724-80-1670 FAX: +81-724-80-1655 E-mail: hsrrb@osa.jhsf.or.jp

(2008 November)